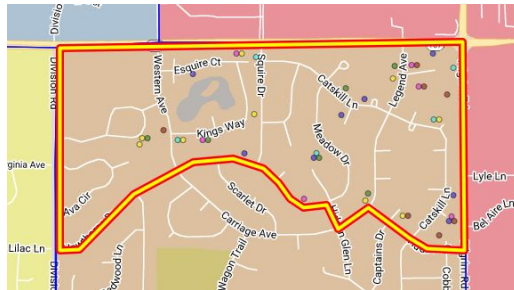


Grandfathering Impact

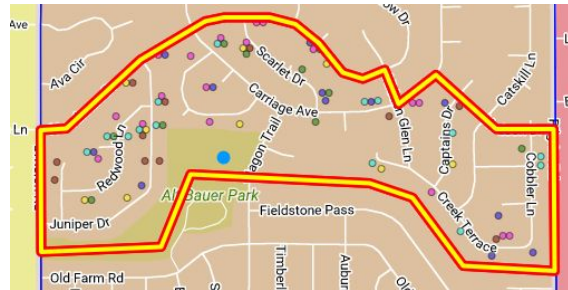
The Areas of Consideration - CL and MA

Current Shared Area



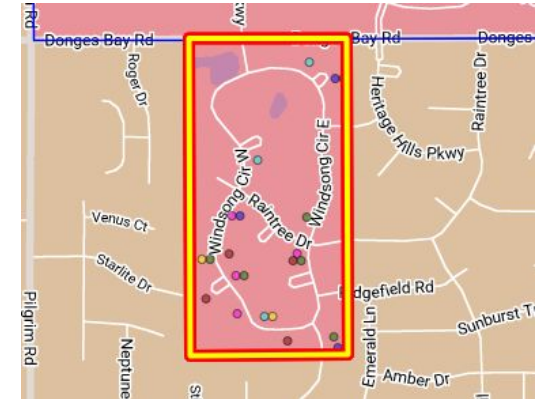
	Count	%
● KG	8	19.5%
● 1	9	22.0%
● 2	6	14.6%
● 3	5	12.2%
● 4	7	17.1%
● 5	6	14.6%

Alt Bauer Park Area



	Count	%
● KG	12	16.2%
● 1	9	12.2%
● 2	18	24.3%
● 3	14	18.9%
● 4	11	14.9%
● 5	10	13.5%

Windsong Circle



	Count	%
● KG	3	13.6%
● 1	2	9.1%
● 2	4	18.2%
● 3	3	13.6%
● 4	4	18.2%
● 5	6	27.3%

The Concept

These three areas represent the majority of the “shift” families: the students who would be moving out of their current school to allow space for other students from other districts.

In the case of the Shared Area, this is primarily designed to eliminate the shared area as a boundary consideration while opening space at County Line for the incoming students from Amy Belle.

The Alt Bauer Park area would be shifted to MacArthur in Option 1 because this makes the most geographic sense while also opening up space for former Amy Belle students.

The Windsong Circle is both a geographic consideration as well as a balancing consideration.

Effect on Option 1: Survey Driven

The first thing to establish: Grandfathering students in the Alt Bauer Park area is not feasible. There are 74 students, representing half a classroom in each grade level.

Assuming the above is true, grandfathering the Shared Area back down to County Line is unconventional if students south of them don't have the option to.

The Windsong Circle area could be grandfathered into MacArthur at an increase of about a student per classroom per grade level. We would still be at or below our optimal class sizes but leaves little to no room for expected growth from the apartment complexes.

MacArthur Students By Grade

KG:	89 Students
1st:	71 Students
2nd:	101 Students
3rd:	96 Students
4th:	71 Students
5th:	98 Students

KG:	4 Classes of 22
1st:	3 Classes of 24
2nd:	4 Classes of 25
3rd:	4 Classes of 24
4th:	3 Classes of 24
5th:	4 Classes of 25

Effect on Option 2: Low Impact

MacArthur Students By Grade

KG: 70 Students
1st: 53 Students
2nd: 78 Students
3rd: 78 Students
4th: 57 Students
5th: 81 Students

KG: 3 Classes of 23
1st: 3 Classes of 18
2nd: 4 Classes of 19
3rd: 4 Classes of 19
4th: 3 Classes of 19
5th: 4 Classes of 20

The only area in consideration for this option is the Shared Area.

This increases the number of students at County Line and reduces them at MacArthur by about 2 students per class, per grade level.

County Line ends up with very high class sizes, with MacArthur very low.

County Line Students By Grade

KG: 72 Students
1st: 96 Students
2nd: 87 Students
3rd: 110 Students
4th: 99 Students
5th: 92 Students

KG: 3 Classes of 24
1st: 4 Classes of 24
2nd: 4 Classes of 22
3rd: 4 Classes of 28
4th: 4 Classes of 25
5th: 4 Classes of 23

Effect on Option 2b: Modified Low Impact

MacArthur Students By Grade

KG: 70 Students
1st: 53 Students
2nd: 78 Students
3rd: 78 Students
4th: 57 Students
5th: 81 Students

KG: 3 Classes of 23
1st: 3 Classes of 18
2nd: 4 Classes of 19
3rd: 4 Classes of 19
4th: 3 Classes of 19
5th: 4 Classes of 20

This adds the Windsong Circle area as one to be grandfathered, reducing the change in numbers across both schools.

MacArthur remains at the very low class sizes, while County Line is slightly lower than the grandfathering effect on Option 2.

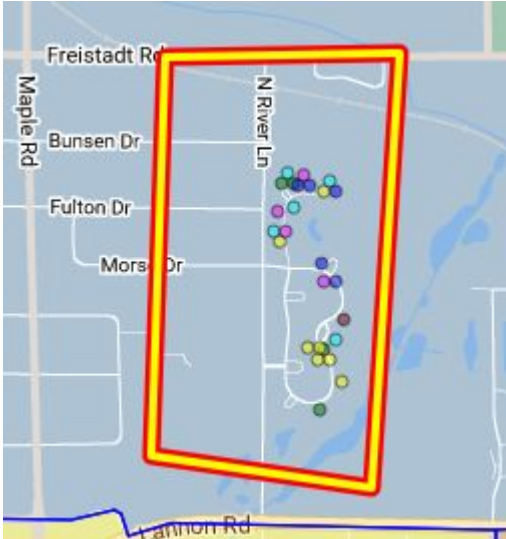
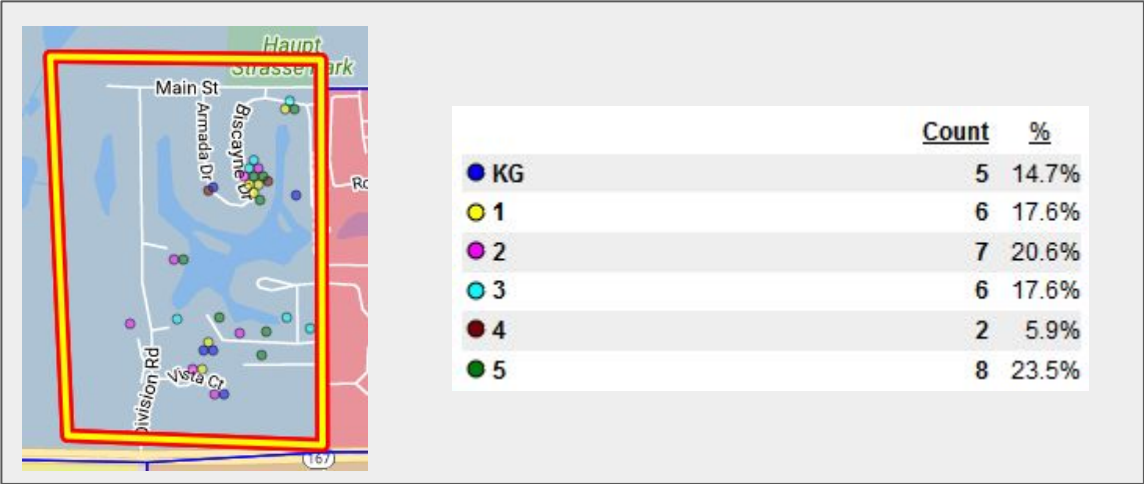
County Line Students By Grade

KG: 70 Students
1st: 90 Students
2nd: 85 Students
3rd: 109 Students
4th: 96 Students
5th: 86 Students

KG: 3 Classes of 23
1st: 4 Classes of 23
2nd: 4 Classes of 21
3rd: 4 Classes of 27
4th: 4 Classes of 24
5th: 4 Classes of 22

Rockfield Considerations

If we are considering grandfathering students who are shifting out to make room for students who are coming in from Amy Belle, there are also two neighborhoods that currently attend Rockfield to address. The Driftwood Area (34 students) is set to move in all scenarios, while the River Lane neighborhood (26 students) is set to move in Option 2 and 2b.



Rockfield Changes

Rockfield Option 1 Base

KG: 47 Students
 1st: 56 Students
 2nd: 36 Students
 3rd: 48 Students
 4th: 52 Students
 5th: 59 Students

KG: 2 Classes of 23
 1st: 3 Classes of 19
 2nd: 2 Classes of 18
 3rd: 2 Classes of 24
 4th: 3 Classes of 17
 5th: 3 Classes of 20

Rockfield Option 1 GF'd

KG: 52 Students
 1st: 62 Students
 2nd: 43 Students
 3rd: 54 Students
 4th: 54 Students
 5th: 67 Students

KG: 3 Classes of 17
 1st: 3 Classes of 21
 2nd: 2 Classes of 22
 3rd: 3 Classes of 18
 4th: 3 Classes of 18
 5th: 3 Classes of 22

Rockfield Option 2 Base

KG: 55 Students
 1st: 66 Students
 2nd: 42 Students
 3rd: 50 Students
 4th: 59 Students
 5th: 75 Students

KG: 3 Classes of 18
 1st: 3 Classes of 22
 2nd: 2 Classes of 21
 3rd: 2 Classes of 25
 4th: 3 Classes of 20
 5th: 3 Classes of 25

Rockfield Option 2 GF'd

KG: 57 Students
 1st: 69 Students
 2nd: 47 Students
 3rd: 59 Students
 4th: 55 Students
 5th: 71 Students

KG: 3 Classes of 19
 1st: 3 Classes of 23
 2nd: 2 Classes of 24
 3rd: 3 Classes of 20
 4th: 3 Classes of 18
 5th: 3 Classes of 24

Rockfield Option 2b Base

KG: 57 Students
 1st: 72 Students
 2nd: 44 Students
 3rd: 52 Students
 4th: 62 Students
 5th: 81 Students*

KG: 3 Classes of 19
 1st: 3 Classes of 24
 2nd: 2 Classes of 22
 3rd: 3 Classes of 17
 4th: 3 Classes of 21
 5th: 3 Classes of 27*

Rockfield Option 2b GF'd

KG: 67 Students
 1st: 85 Students
 2nd: 55 Students
 3rd: 63 Students
 4th: 65 Students
 5th: 93 Students*

KG: 3 Classes of 22
 1st: 3 Classes of 28
 2nd: 3 Classes of 18
 3rd: 3 Classes of 21
 4th: 3 Classes of 22
 5th: 3 Classes of 31

*This class is abnormally large and will be at KMS when this boundary would be in effect

Impact on MacArthur

With the exception of Option 1 - Survey Driven applying the ability to grandfather students essentially leaves MacArthur exactly the same as it is right now.

In Option 1, MacArthur would be gaining the entire Shared Area plus Alt Bauer Park area, retain grandfathered students from Windsong Circle, and lose grandfathered students from the Driftwood area back to Rockfield.

Option 1

KG:	84 Students	KG:	4 Classes of 21
1st:	65 Students	1st:	3 Classes of 22
2nd:	94 Students	2nd:	4 Classes of 24
3rd:	90 Students	3rd:	4 Classes of 23
4th:	69 Students	4th:	3 Classes of 23
5th:	90 Students	5th:	4 Classes of 23

Options 2 and 2a

KG:	62 Students	KG:	3 Classes of 21
1st:	42 Students	1st:	2 Classes of 21
2nd:	68 Students	2nd:	3 Classes of 23
3rd:	67 Students	3rd:	3 Classes of 22
4th:	55 Students	4th:	3 Classes of 18
5th:	70 Students	5th:	3 Classes of 23